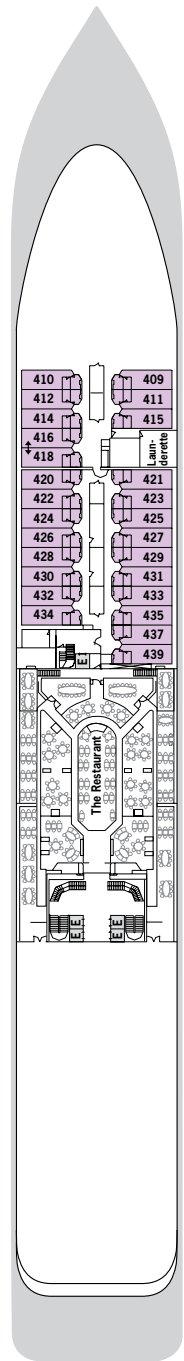


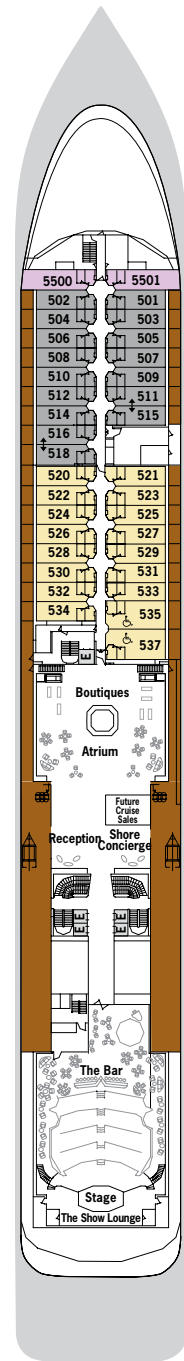
# SILVER SHADOW – Deck Plans

Effective from December 4, 2020



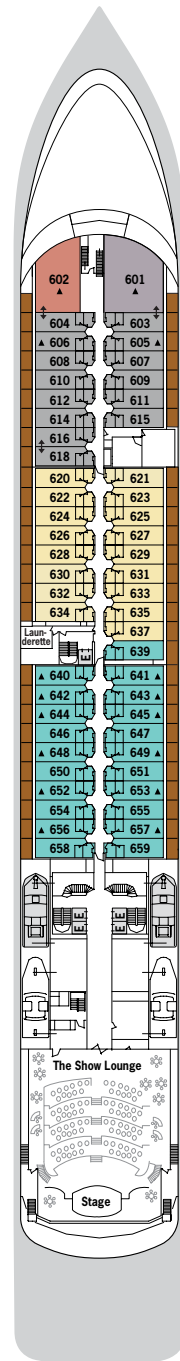
**DECK 4**

The Restaurant



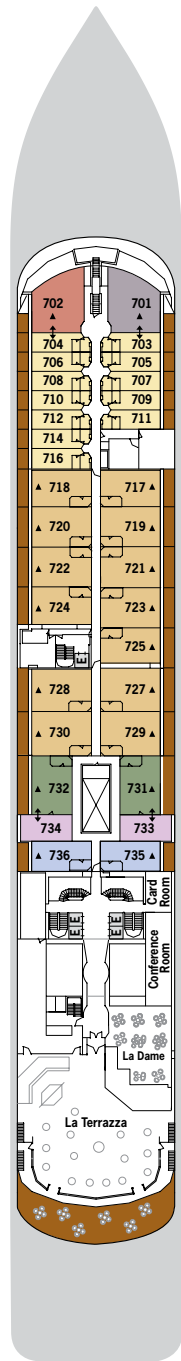
**DECK 5**

Boutiques  
Atrium  
Future Cruise Sales  
Reception/Guest Relations  
Shore Concierge  
The Bar  
The Show Lounge



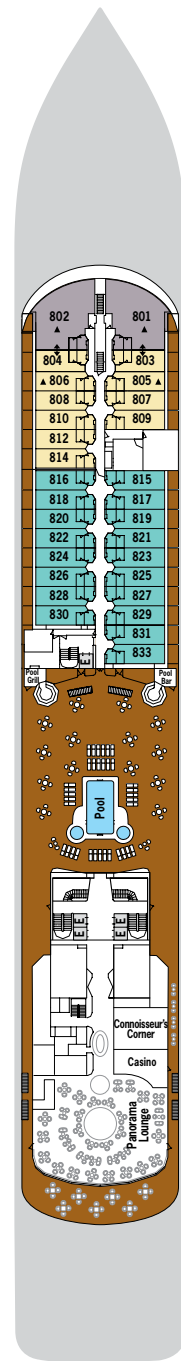
**DECK 6**

The Show Lounge



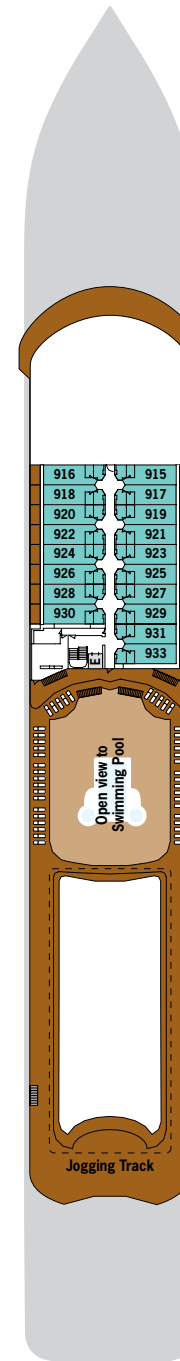
**DECK 7**

La Terrazza  
La Dame  
Conference/Card Room



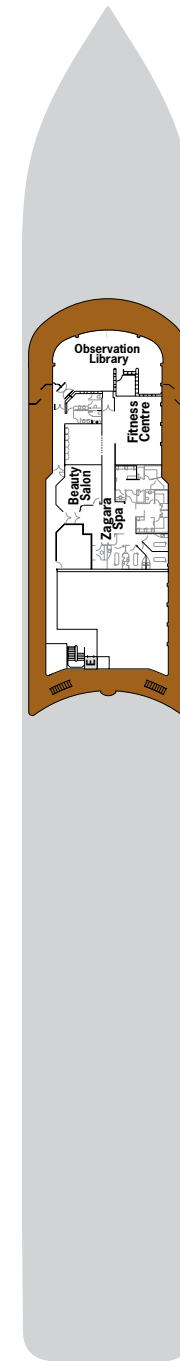
**DECK 8**

Pool Deck  
Pool Bar  
The Grill  
Connoisseur's Corner  
Connoisseur's Corner  
Outdoor area  
Casino  
Panorama Lounge



**DECK 9**

Jogging Track



**DECK 10**

Fitness Centre  
Zagara Beauty Spa  
Observation Library

## SUITE CATEGORIES

- Owner's Suite . . . . . ●
- Grand Suite . . . . . ●
- Royal Suite . . . . . ●
- Silver Suite . . . . . ●
- Medallion Suite . . . . . ●
- Deluxe Veranda Suite . . . . . ●
- Superior Veranda Suite . . . . . ●
- Classic Veranda Suite . . . . . ●
- Vista Suite . . . . . ●

## SPECIFICATIONS

- Crew . . . . . 302
- Officers . . . . . International
- Guests . . . . . 392
- Tonnage . . . . . 28,258
- Length . . . . . 610 Feet/186 Metres
- Width . . . . . 81.8 Feet/24.9 Metres
- Speed . . . . . 18.5 Knots
- Passenger Decks . . . . . 7
- 3rd Guest Capacity . . . . . ▲
- Connecting Suites . . . . . ⇕
- 416/418, 511/515, 516/518, 616/618, 731/733, 732/734
- Handicap Suites . . . . . ♿
- 535,537
- Refurbishment . . . . . 2019
- Registry . . . . . Bahamas

Deckplans are for illustration purposes only and may be subject to change

Suite diagrams shown are for illustration purposes only and may vary from actual square footage. Please refer to suite specifications for square footage.

# SILVER SHADOW – Suite Diagrams

- All suites feature:*
- Butler service
  - Refrigerator and bar setup stocked with your preferences
  - Pillow menu
  - Luxury bath amenities
  - Plush bathrobe and slippers
  - Personalised stationery
  - Umbrella
  - Complimentary Wifi for all suites
  - Direct-dial telephone(s)
  - Champagne on arrival



## OWNER'S SUITE

Available as a one-bedroom configuration or as bedroom twos (as illustrated) by adjoining with a Vista Suite.

**ONE BEDROOM: 919 SQ. FT. / 85 M<sup>2</sup>**  
**INCLUDING VERANDA (220 SQ. FT. / 20 M<sup>2</sup>);**

**TWO BEDROOM: 1,264 SQ. FT. / 117 M<sup>2</sup>**  
**INCLUDING VERANDA (220 SQ. FT. / 20 M<sup>2</sup>)**

- Large veranda with patio furniture and floor-to-ceiling glass doors; bedroom two has additional large picture window
- Living room with sitting area; bedroom two has additional sitting area
- Separate dining area and bar
- Twin beds or queen-sized bed; bedroom two has additional twin beds or queen-sized bed
- Marble bathroom with double vanity, separate shower and full-sized whirlpool bath, plus a powder room; bedroom two has additional marble bathroom with full-sized bath
- Walk-in wardrobe(s) with personal safe
- Vanity table(s) with hair dryer
- Writing desk(s)
- 32" / 81 cm flat-screen television(s) with Interactive Media Library
- Bose® Sound system with bluetooth connectivity
- Unlimited Premium Wifi
- Illy® espresso machine



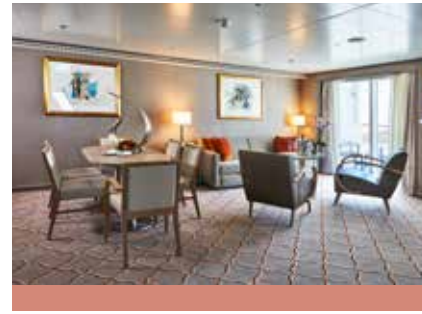
## GRAND SUITE

Available as a one-bedroom configuration or as bedroom twos (as illustrated) by adjoining with a Veranda Suite.

**ONE BEDROOM: 941-1,090 SQ. FT. / 87-101 M<sup>2</sup>**  
**INCLUDING VERANDA (103-116 SQ. FT. / 10-11 M<sup>2</sup>);**

**TWO BEDROOM: 1,286-1,435 SQ. FT. / 119-133 M<sup>2</sup>**  
**INCLUDING VERANDA (163-176 SQ. FT. / 16-17 M<sup>2</sup>)**

- Large veranda with patio furniture and floor-to-ceiling glass doors; bedroom two has additional veranda
- Living room with sitting area; bedroom two has additional sitting area
- Separate dining area and bar
- Twin beds or queen-sized bed; bedroom two has additional twin beds or queen-sized bed
- Marble bathroom with double vanity, separate shower and full-sized whirlpool bath, plus a powder room; bedroom two has additional marble bathroom with full-sized bath
- Walk-in wardrobe(s) with personal safe
- Vanity table(s) with hair dryer
- Writing desk(s)
- 32" / 81 cm flat-screen television(s) with Interactive Media Library
- Bose® Sound system with bluetooth connectivity
- Unlimited Premium Wifi
- Illy® espresso machine



## ROYAL SUITE

Available as a one-bedroom configuration or as bedroom twos (as illustrated) by adjoining with a Veranda Suite.

**ONE BEDROOM: 967-1,007 SQ. FT. / 90-94 M<sup>2</sup>**  
**INCLUDING VERANDA (110-116 SQ. FT. / 10-11 M<sup>2</sup>);**

**TWO BEDROOM: 1,312-1,352 SQ. FT. / 122-126 M<sup>2</sup>**  
**INCLUDING VERANDA (170-176 SQ. FT. / 16-17 M<sup>2</sup>)**

- Large veranda with patio furniture and floor-to-ceiling glass doors; bedroom two has additional veranda
- Living room with sitting area; bedroom two has additional sitting area
- Separate dining area and bar
- Twin beds or queen-sized bed; bedroom two has additional twin beds or queen-sized bed
- Marble bathroom with double vanity, separate shower and full-sized whirlpool bath, plus a powder room; bedroom two has additional marble bathroom with full-sized bath
- Walk-in wardrobe(s) with personal safe
- Vanity table(s) with hair dryer
- Writing desk(s)
- 32" / 81 cm flat-screen television(s) with Interactive Media Library
- Bose® Sound system with bluetooth connectivity
- Unlimited Premium Wifi
- Illy® espresso machine

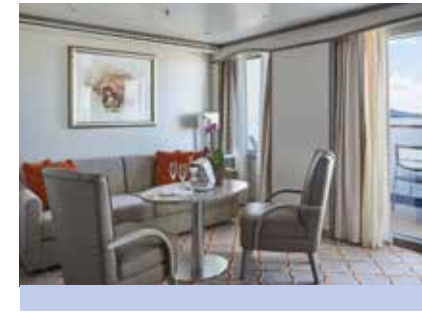


## SILVER SUITE

Silver Suites accommodate three guests.

**653-701 SQ. FT. / 61-65 M<sup>2</sup>**  
**INCLUDING VERANDA (110-123 SQ. FT. / 10-11 M<sup>2</sup>)**

- Veranda with patio furniture and floor-to-ceiling glass doors
- Living room (with convertible sofa to accommodate an additional guest)
- Sitting area
- Separate dining area
- Twin beds or queen-sized bed
- Marble bathroom with double vanity, separate shower and full-sized whirlpool bath
- Walk-in wardrobe with personal safe
- Vanity table with hair dryer
- Writing desk
- 32" / 81 cm flat-screen television(s) with Interactive Media Library
- Bose® Sound system with bluetooth connectivity
- Unlimited Premium Wifi
- Illy® espresso machine

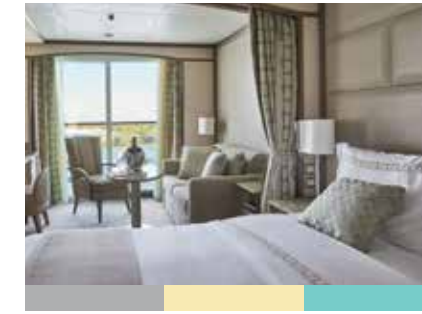


## MEDALLION SUITE

Medallion Suites accommodate three guests.

**521 SQ. FT. / 49 M<sup>2</sup>**  
**INCLUDING VERANDA (81 SQ. FT. / 8 M<sup>2</sup>)**

- Veranda with patio furniture and floor-to-ceiling glass doors
- Living room with sitting and dining area
- Twin beds or queen-sized bed
- Marble bathroom with double vanity, separate shower and full-sized whirlpool bath
- Walk-in wardrobe with personal safe
- Vanity table with hair dryer
- Writing desk
- 32" / 81 cm flat-screen television with Interactive Media Library
- Bose® Sound system with bluetooth connectivity
- Unlimited Premium Wifi
- Illy® espresso machine



## DELUXE VERANDA SUITE SUPERIOR VERANDA SUITE CLASSIC VERANDA SUITE

Veranda Suites 605, 606, 640-645, 648, 649, 652, 653, 656 and 657 accommodate three guests. Deluxe Verandas offer preferred central location with identical accommodations to Classic and Superior Verandas.

**345 SQ. FT. / 32 M<sup>2</sup>**  
**INCLUDING VERANDA (60 SQ. FT. / 6 M<sup>2</sup>)**

- Veranda with patio furniture and floor-to-ceiling glass doors
- Sitting area
- Twin beds or queen-sized bed
- Marble bathroom with double vanity, full-sized bath, separate shower
- Walk-in wardrobe with personal safe
- Vanity table with hair dryer
- Writing desk
- 32" / 81 cm flat-screen television with Interactive Media Library
- Unlimited Standard Wifi



## VISTA SUITE

Vista Suites accommodate three guests.

**287 SQ. FT. / 27 M<sup>2</sup>**

- Large picture window providing panoramic ocean views (Vista Suite)
- Sitting area
- Twin beds or queen-sized bed
- Marble bathroom with double vanity, full-sized bath, separate shower
- Walk-in wardrobe with personal safe
- Vanity table with hair dryer
- Writing desk
- 32" / 81 cm flat-screen television with Interactive Media Library
- Unlimited Standard Wifi

Images are intended as a general reference. Features, materials, finishes and layout may be different than shown.

